

Finding National Register Nominations using Ask ReGIS

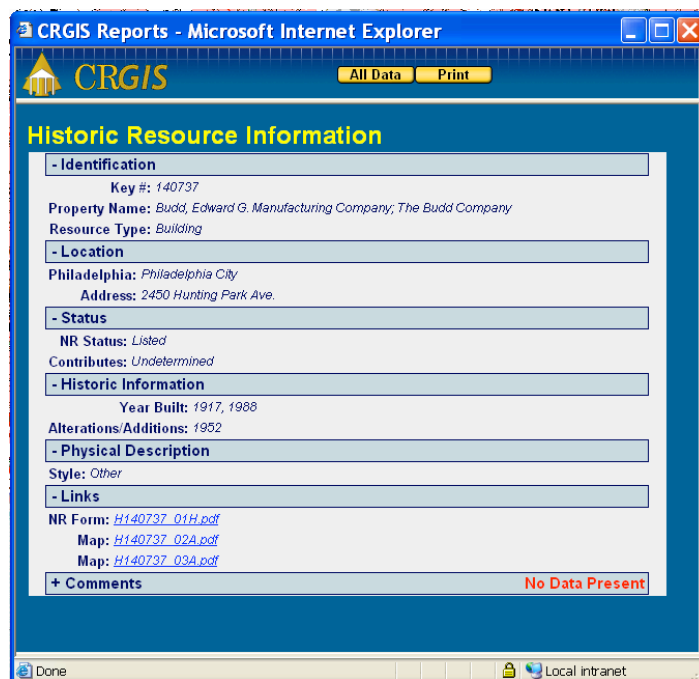
Refer to the *Login and Begin Tutorial* at

<http://www.portal.state.pa.us/portal/server.pt/community/crgis/3802/tutorial/418407> to login to the CRGIS.

Finding a National Register Nomination using a Map

Refer to the *Map Tools Tutorial* at

<http://www.portal.state.pa.us/portal/server.pt/community/crgis/3802/tutorial/418407> to learn how to map resources. Listed properties are shown in blue. Blue triangles may represent individual buildings or the center of a property for which we have no boundaries; gray areas with blue borders may represent larger properties or districts. When you find a listed property, click on it and a report will come up.



If the nomination documents have been uploaded to the CRGIS, they will appear under "Links" in the report. Click on the appropriate link to see the nomination form or a site plan/district map or a section of the USGS Topographic Map or the inventory (for district and large complexes) or some photographs. The forms are in .pdf format and can be downloaded to the user's computer. Photographs are in .jpg format.

While we are transitioning to a single system, it may be necessary to check both the CRGIS and the older ARCH site to find all materials. For older listings, all documents and photos should be available on ARCH (<http://www.arch.state.pa.us>) and most of the photos should be on the CRGIS. For about half of the properties, all materials should be in both places. Properties listed within the last year and a half may be waiting to be

uploaded and not available on either site. Although the database is maintained daily, there is a time lag for the attachments due to the time needed to scan the documents and schedule uploading, which occurs only a few times each year. If the nomination is in neither place, contact BHP for a copy of the documents by emailing the CRGIS at ra-crgis@state.pa.us.

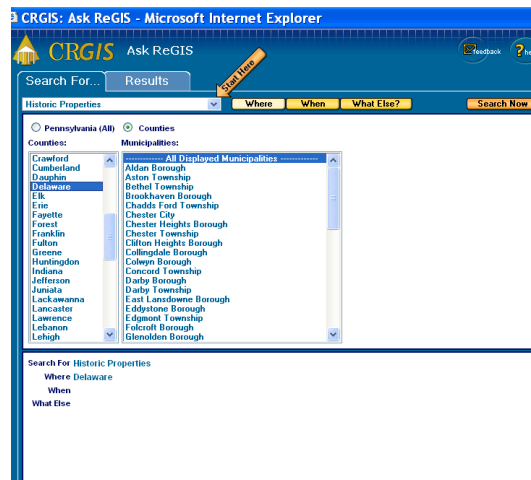
Finding a National Register Nomination using Ask ReGIS

Refer to the *Ask ReGIS Tutorial* at

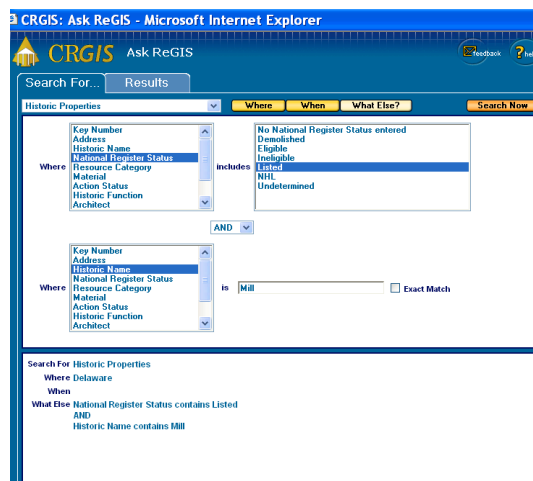
<http://www.portal.state.pa.us/portal/server.pt/community/crgis/3802/tutorial/418407> for information on how to use Ask ReGIS.

If you were looking for a property in Delaware County and you knew it was called a mill, but didn't remember the exact name, you would:

1. Click on "Ask ReGIS"
2. Click on "Counties" and highlight Delaware.



3. Click on "What Else," highlight "National Register Status" and highlight "Listed"
4. Then, highlight "And," and, below that, highlight "Historic Name," and enter "mill."



- Then Click “Search Now.” A window will pop up showing all properties that meet those conditions.



When you find the listed property, click on the record and follow the directions above for finding a National Register nomination using a map.

Keep in mind that if the nomination is not on the CRGIS it may still be available on ARCH or it may be waiting to be uploaded. If you are looking for an older nomination and it is not available in either place, it is also possible that it was never scanned. We would appreciate your contacting us about such missing documents.

If you have any questions about these directions, please contact the CRGIS or any BHP National Register Section staff member.